



# M-POWER-3T

## AC POWER & DATA CONNECTIVITY SOLUTION

M-POWER-3TM2-ABX-M2ADH

Distributed by



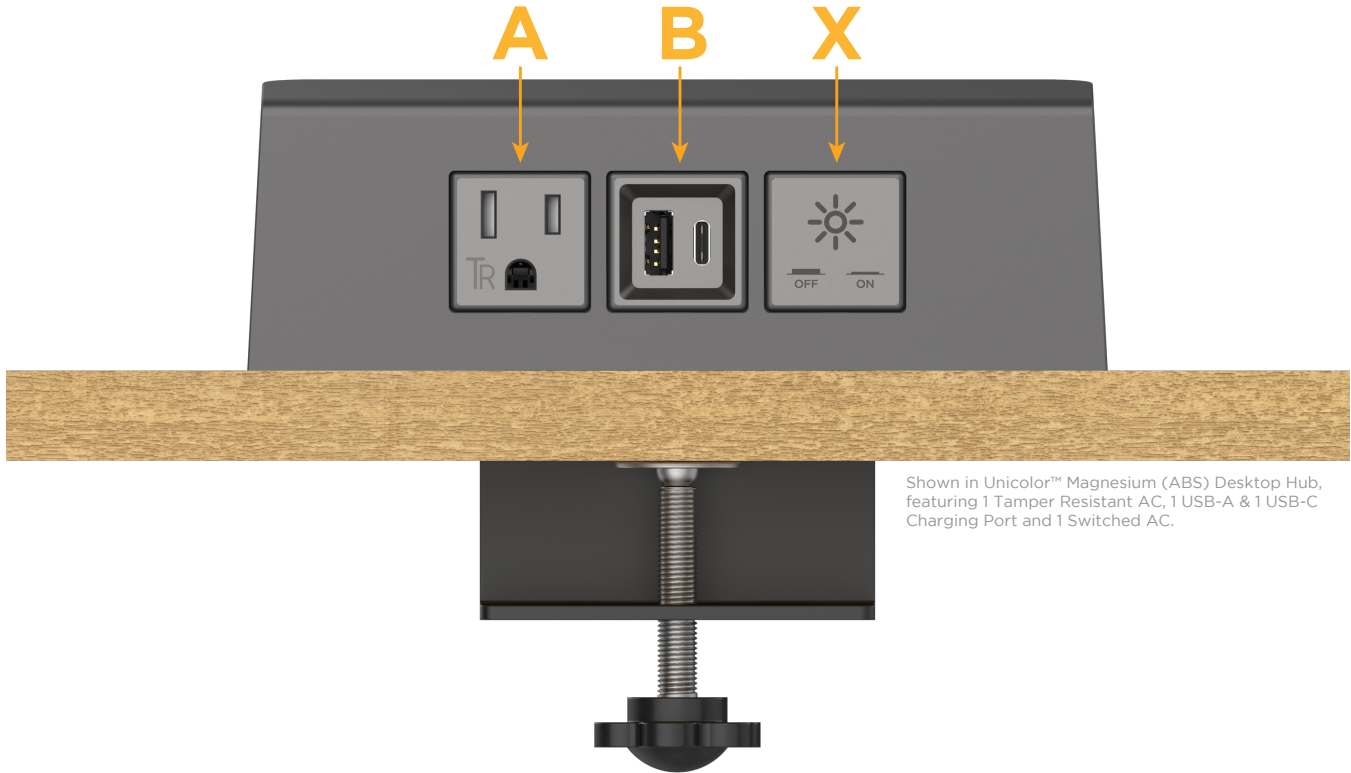
Mormax Company, Inc. 914-699-0101  
8 Westchester Plaza sales@mormax.com  
Elmsford, NY 10523 mormax.com

Metro Light & Power's line of power & data solutions features sophisticated design elements combined with ease of installation. Streamlined and compact, our range of desktop power & data hubs advances the state of the industry with their cutting edge look and feel. Our full line of power & data units is available in many finishes and configurations, in addition to a custom color and finish capability for our clients.

### Desktop Hub Finish: UNICOLOR™ MAGNESIUM (ABS)

Custom Finishes Available

M-POWER-3TM2-ABX-M2ADH



Shown in Unicolor™ Magnesium (ABS) Desktop Hub, featuring 1 Tamper Resistant AC, 1 USB-A & 1 USB-C Charging Port and 1 Switched AC.

### Features:

#### Module/Port Options:

- A** Tamper Resistant AC Receptacle
- B** USB-A & USB-C (3.0A USB-A / 15W USB-C)
- U** Double USB-A (Fast Charging Ports - Rated for 3.2A)
- H** HDMI
- 6** CAT 6
- 12** RJ 12
- X** Switched AC
- Y** 3-Way Switch (Low Voltage)
- C** USB-C (27W High Speed Charging Port)
- Z** USB-C (18W High Speed Charging Port)
- R** Switched AC (Rocker Switch)

#### Plug:

- Supplied with Low Profile Flat 45° Angle 120 VAC Plug
- Optional Standard Straight 120 VAC Plug
- Optional Straight 120 VAC Pass-through Plug

- CLEAN, COMPACT DESIGN
- STREAMLINED
- QUICK, EASY INSTALLATION
- REAR-EXITING CORDS
- PLUG & PLAY
- 6' AC CORD & PLUG (FLAT PLUG STANDARD)
- CUSTOMIZABLE CONFIGURATIONS AND FINISHES
- UL LISTED FOR MOUNTING IN FURNITURE
- 15A





# M-POWER-3T

## AC POWER & DATA CONNECTIVITY SOLUTION

M-POWER-3TM2-ABX-M2ADH

Distributed by

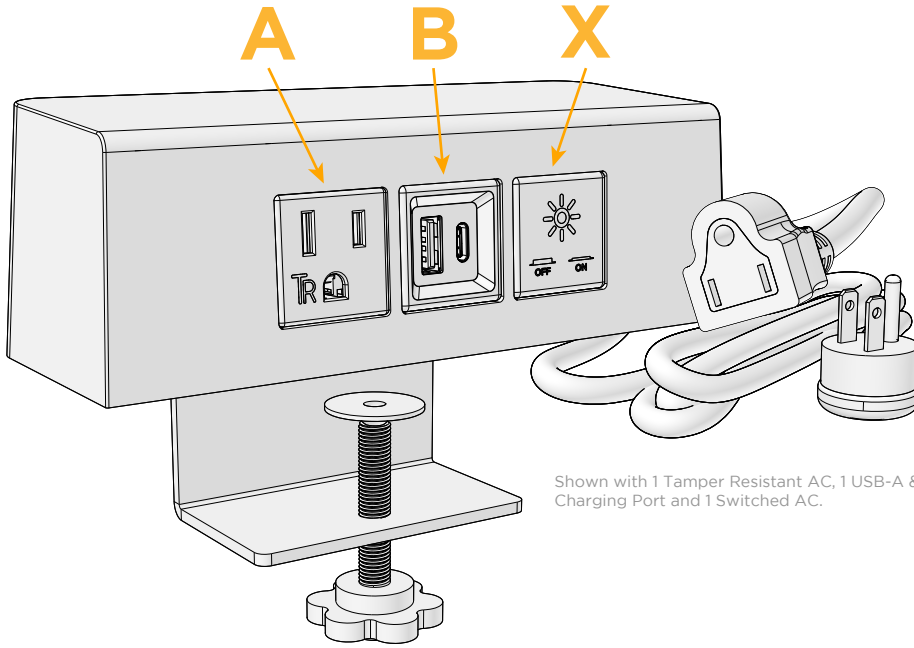


Mormax Company, Inc. 914-699-0101  
8 Westchester Plaza sales@mormax.com  
Elmsford, NY 10523 mormax.com

Specs:

### Modules/Ports:

- A Tamper Resistant AC Receptacle
- B USB-A & USB-C (3.0A USB-A / 15W USB-C)
- X Switched AC



Shown with 1 Tamper Resistant AC, 1 USB-A & 1 USB-C Charging Port and 1 Switched AC.

