



M-POWER-5T AC POWER & DATA CONNECTIVITY SOLUTION

TWIN OUTLETS WITH 3-WAY SWITCHING FOR LOW VOLTAGE LED LIGHTING AND SWITCHED AC

M-POWER-5T-AUAYX-MSTP(2)

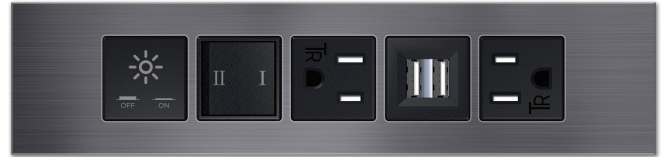


Mormax Company, Inc.
8 Westchester Plaza
Elmsford, NY 10523

914-699-0101
sales@mormax.com
mormax.com

Metro Light & Power's line of power & data solutions offers sophisticated design elements combined with greater ease of installation. Streamlined and low-profile, enhanced by side-exiting cords, our outlets advance the industry with their cutting-edge look and feel. We believe flexibility is key, and we provide a variety of mounting options, including the ability to mount in limited spaces. Our outlets are available in many finishes and configurations, in addition to a custom color and finish capability for our clients.

Trim Plate Finish: **MAGNESIUM PLATED STEEL**
Custom Finishes Available M-POWER-5T-AUAYX-MSTP(2)



Features:

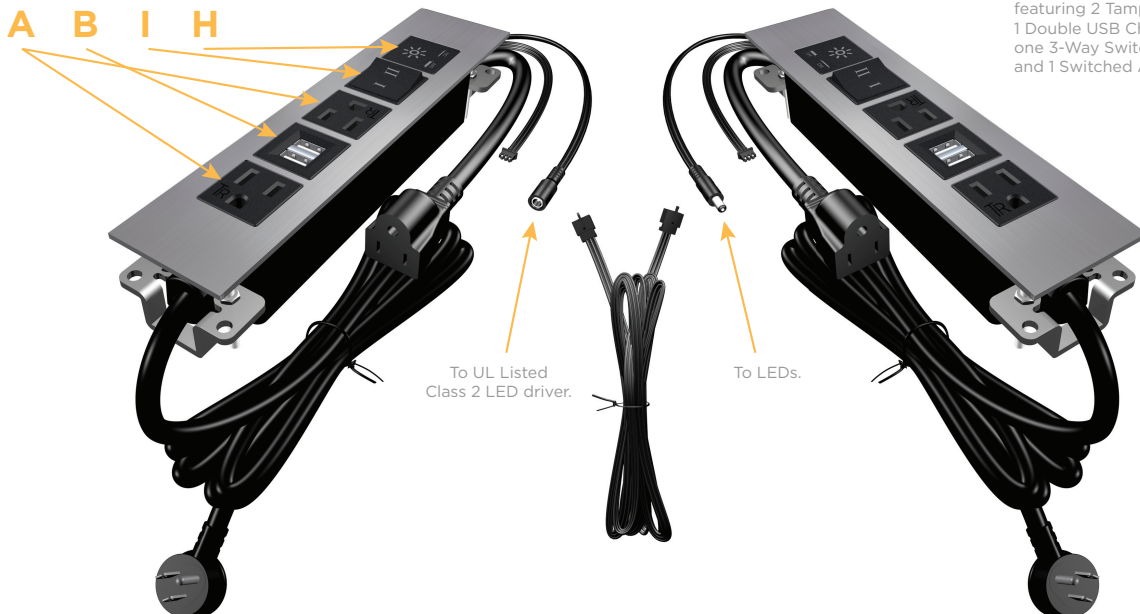
Module/Port Options:

- A** Tamper Resistant AC Receptacle
- B** Double USB (Fast Charging Ports - Rated for 3.2A)
- C** HDMI
- D** CAT 6
- E** 3.5mm Mini Stereo Jack
- F** Single USB (Fast Charging Port - Rated for 3.2A)
- G** RJ 12
- H** Switched AC
- I** 3-Way Switch
- J** USB-C (27W High Speed Charging Port)
- K** USB-C (18W High Speed Charging Port)
- L** Switched AC (Rocker Switch)

Plug:

- Low Profile Flat 45° Angle 120 VAC Plug
- Standard Straight 120 VAC Plug

- **CLEAN, COMPACT DESIGN**
- **STREAMLINED**
- **LOW PROFILE**
- **SIDE-EXITING CORDS**
- **PLUG & PLAY**
- **TWIN OUTLETS WITH 3-WAY SWITCHING FOR LOW VOLTAGE LED LIGHTING**
- **3.2A HIGH SPEED USB CHARGING FOR ALL DEVICES**
- **6' AC CORD & PLUG (FLAT PLUG STANDARD)**
- **CUSTOMIZABLE CONFIGURATIONS AND FINISHES**
- **UL LISTED FOR MOUNTING IN FURNITURE**
- **15A**
- **DESIGNED FOR USE WITH METRO L&P'S UL LISTED LEDS, AND CLASS 2 UL LISTED LED DRIVERS**



Shown in Magnesium Plated Steel Trim Plate, featuring 2 Tamper Resistant ACs, 1 Double USB Charging Port, one 3-Way Switch, and 1 Switched AC.





M-POWER-5T AC POWER & DATA CONNECTIVITY SOLUTION

TWIN OUTLETS WITH 3-WAY SWITCHING
FOR LOW VOLTAGE LED LIGHTING AND SWITCHED AC
M-POWER-5T-AUAYX-MSTP(2)

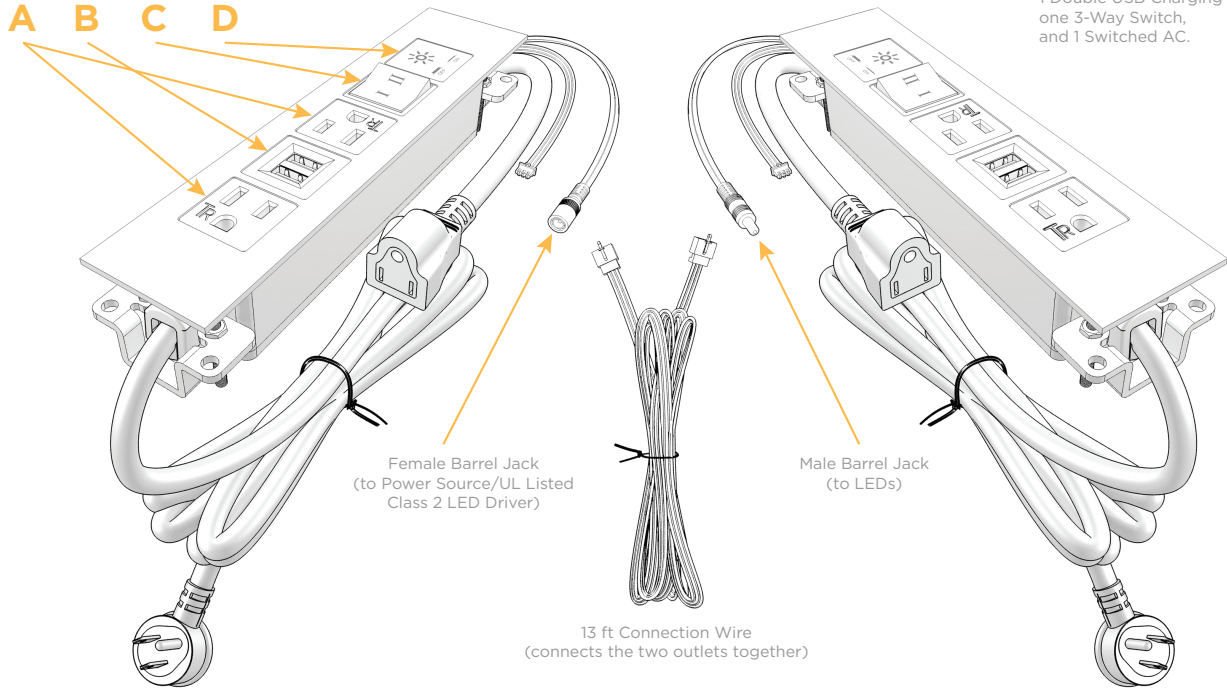


Mormax Company, Inc.
8 Westchester Plaza
Elmsford, NY 10523

914-699-0101
sales@mormax.com
mormax.com

Modules/Ports:

- A** Tamper Resistant AC Receptacle
- B** Double USB (Fast Charging Ports - Rated for 3.2A)
- C** 3-Way Switch
- D** Switched AC



Shown with 2 Tamper Resistant ACs, 1 Double USB Charging Port, one 3-Way Switch, and 1 Switched AC.

