



M-POWER-5T

AC POWER & DATA CONNECTIVITY SOLUTION

M-POWER-5TW-ABDY-WTP(2)

Distributed by



Mormax Company, Inc.

8 Westchester Plaza

Elmsford, NY 10523

914-699-0101

sales@mormax.com

mormax.com

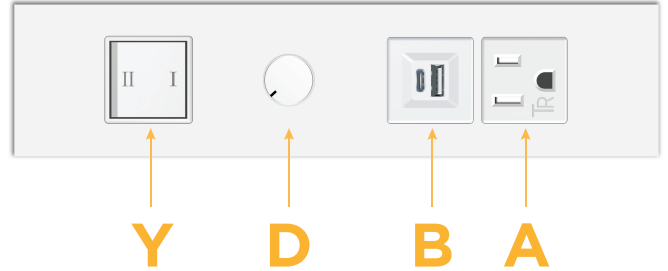
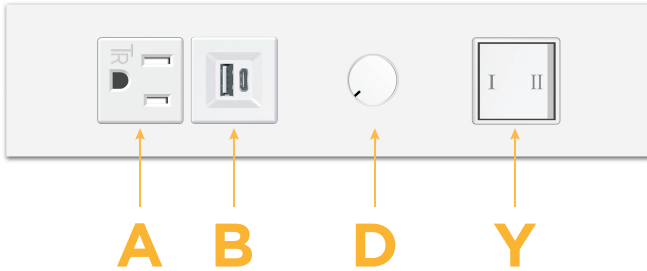
Metro Light & Power's line of power & data solutions offers sophisticated design elements combined with greater ease of installation. Streamlined and low-profile, enhanced by side-exiting cords, our outlets advance the industry with their cutting-edge look and feel. We believe flexibility is key, and we provide a variety of mounting options, including the ability to mount in limited spaces. Our outlets are available in many finishes and configurations, in addition to a custom color and finish capability for our clients.

Plate Finish:

Custom Finishes Available

WHITE (STEEL)

M-POWER-5TW-ABDY-WTP(2)



Features:

Module/Port Options:

- A** Tamper Resistant AC Receptacle
- B** USB-A & USB-C (3.0A USB-A / 15W USB-C)
- U** Double USB-A (Fast Charging Ports - Rated for 3.2A)
- D** AC Dimmer
- H** HDMI
- 6** CAT 6
- 12** RJ 12
- X** Switched AC
- Y** 3-Way Switch
- C** USB-C (27W High Speed Charging Port)
- Z** USB-C (18W High Speed Charging Port)
- R** Switched AC (Rocker Switch)

Plug:

- Supplied with Low Profile Flat 45° Angle 120 VAC Plug
- Optional Standard Straight 120 VAC Plug
- Optional Straight 120 VAC Pass-through Plug

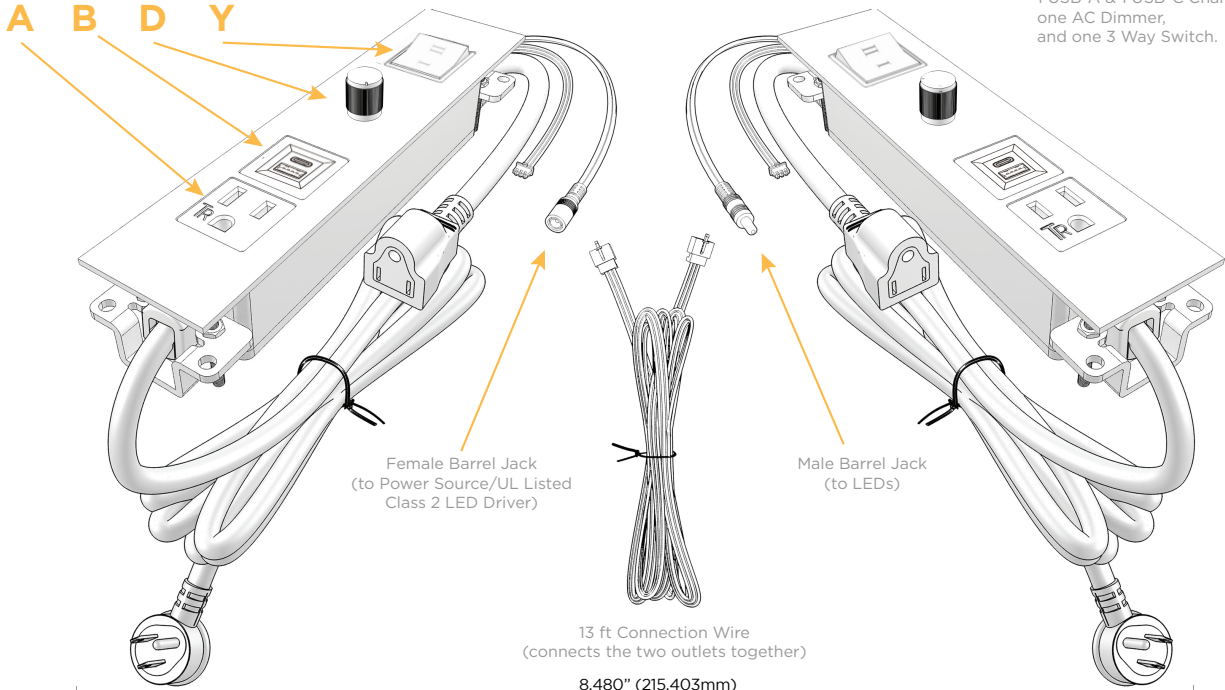
Shown in White (Steel) Plate, featuring 1 Tamper Resistant AC, 1 USB-A & 1 USB-C Charging Port, 1 AC Dimmer Switch, and one 3 Way Switch.

- **CLEAN, COMPACT DESIGN**
- **STREAMLINED**
- **LOW PROFILE**
- **SIDE-EXITING CORDS**
- **PLUG & PLAY**
- **3.0A USB-A / 15W USB-C HIGH SPEED CHARGING FOR ALL DEVICES**
- **TWIN OUTLETS WITH 3-WAY SWITCHING FOR LOW VOLTAGE LED LIGHTING**
- **6' AC CORD & PLUG (FLAT PLUG STANDARD)**
- **CUSTOMIZABLE CONFIGURATIONS AND FINISHES**
- **ETL LISTED IN COMPLIANCE WITH UL962A**
- **0% TO 100% DIMMING**
- **15A**

UL LISTED AND APPROVED FOR USE ONLY WITH METRO LIGHT AND POWER'S UL LISTED LEDS & CLASS 2 UL LISTED LED DRIVERS

Modules/Ports:

- A** Tamper Resistant AC Receptacle
- B** USB-A & USB-C (3.0A USB-A / 15W USB-C)
- D** AC Dimmer
- Y** 3-Way Switch



Shown with 1 Tamper Resistant AC, 1 USB-A & 1 USB-C Charging Port, one AC Dimmer, and one 3 Way Switch.

